



Apartment plans are deemed to be correct but precise details may vary.  
Internal area is accurate to within 5%

# HEATON

## HOUSE



## APARTMENTS

APT 6- 1 BED  
58.7 SQ M, 632 SQ FT



CAMDEN  
STREET

APARTMENTS

FIRST FLOOR

APT 7 - 1 BED  
37 SQ M, 398 SQ FT

APT 8 - 1 BED  
40.4 SQ M, 435 SQ FT

APT 9 - 2 BED  
70 SQ M, 753 SQ FT

APT 10 - 1 BED  
58.2 SQ M, 626 SQ FT

APT 11 - 2 BED  
70 SQ M, 753 SQ FT

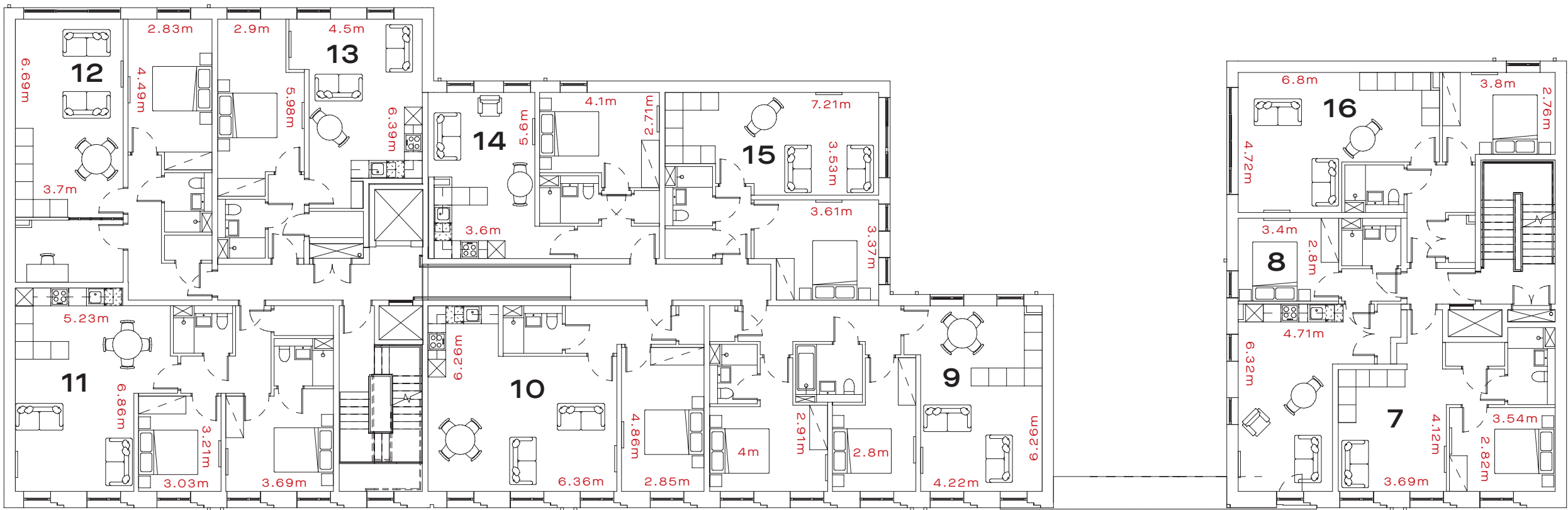
APT 12 - 1 BED  
61.5 SQ M, 662 SQ FT

APT 13 - 1 BED  
48.9 SQ M, 526 SQ FT

APT 14 - 1 BED  
43.1 SQ M, 464 SQ FT

APT 15 - 1 BED  
45.4 SQ M, 489 SQ FT

APT 16 - 1 BED  
49 SQ M, 527 SQ FT



1F

APARTMENTS

SECOND FLOOR

APT 17 - 1 BED  
37 SQ M, 398 SQ FT

APT 18 - 1 BED  
40.4 SQ M, 435 SQ FT

APT 19 - 2 BED  
70 SQ M, 753 SQ FT

APT 20 - 1 BED  
58.2 SQ M, 626 SQ FT

APT 21 - 2 BED  
70 SQ M, 753 SQ FT

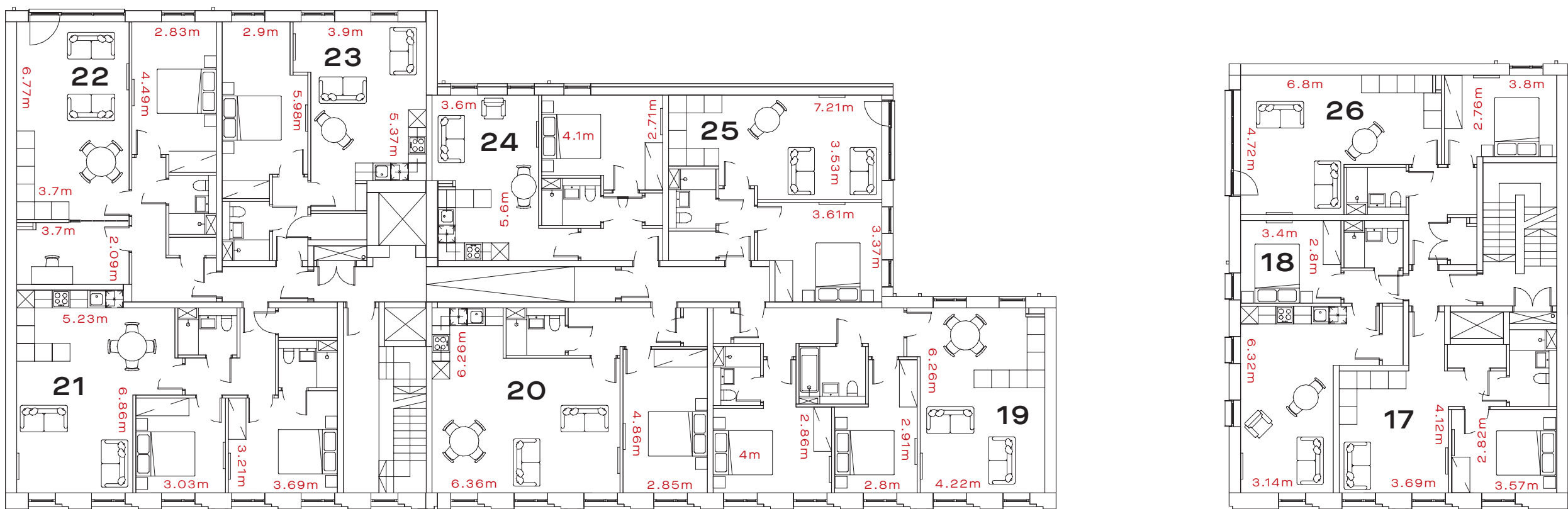
APT 22 - 1 BED  
61.5 SQ M, 662 SQ FT

APT 23 - 1 BED  
48.9 SQ M, 526 SQ FT

APT 24 - 1 BED  
43.1 SQ M, 464 SQ FT

APT 25 - 1 BED  
45.4 SQ M, 489 SQ FT

APT 26 - 1 BED  
49 SQ M, 527 SQ FT



2F

APARTMENTS

THIRD FLOOR

APT 27 - 1 BED  
37 SQ M, 398 SQ FT

APT 28 - 1 BED  
40.4 SQ M, 435 SQ FT

APT 29 - 2 BED  
70 SQ M, 753 SQ FT

APT 30 - 1 BED  
58.2 SQ M, 626 SQ FT

APT 31 - 2 BED  
70 SQ M, 753 SQ FT

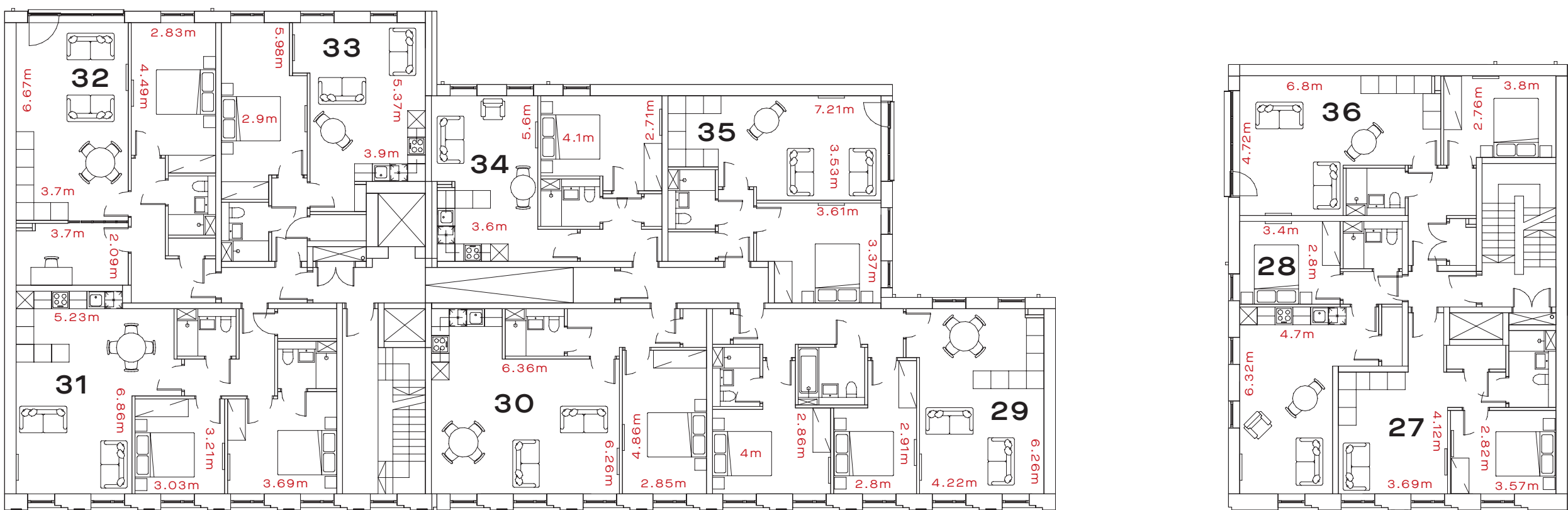
APT 32 - 1 BED  
61.5 SQ M, 662 SQ FT

APT 33 - 1 BED  
48.9 SQ M, 526 SQ FT

APT 34 - 1 BED  
43.1 SQ M, 464 SQ FT

APT 35 - 1 BED  
45.4 SQ M, 489 SQ FT

APT 36 - 1 BED  
49 SQ M, 527 SQ FT



3F

THE LOFTS

FOURTH FLOOR

LOFT 1 - 1 BED  
45.9 SQ M, 494 SQ FT

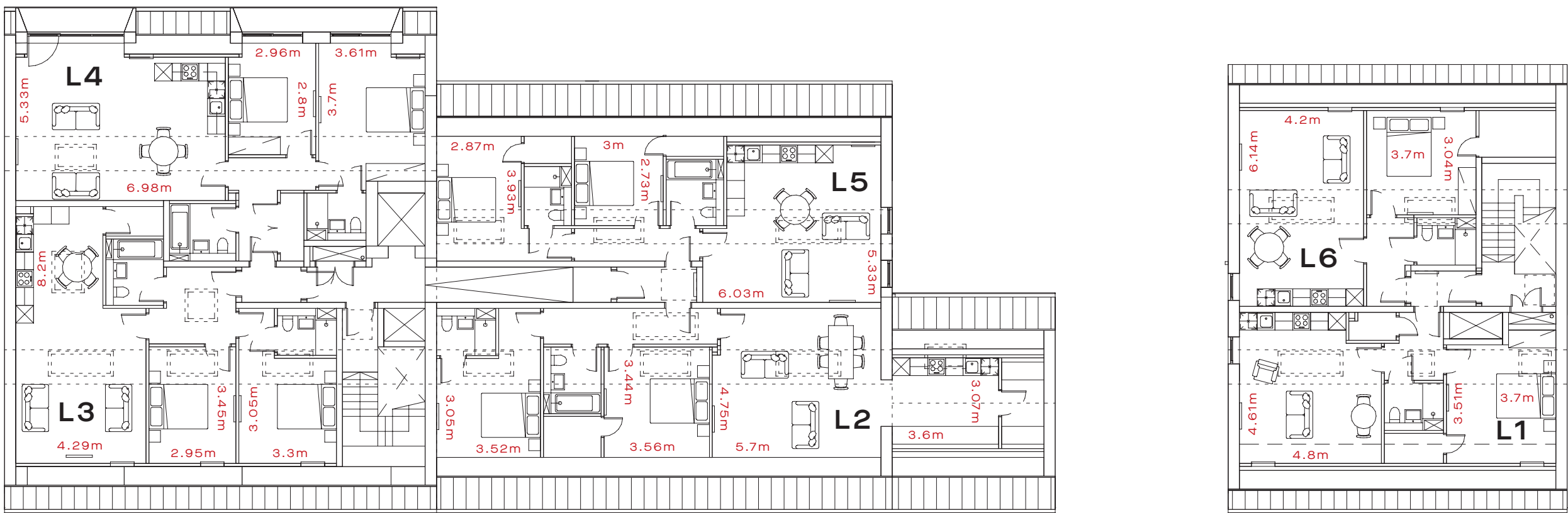
LOFT 2 - 2 BED  
87.4 SQ M, 941 SQ FT

LOFT 3 - 2 BED  
72.1 SQ M, 776 SQ FT

LOFT 4 - 2 BED  
79.2 SQ M, 853 SQ FT

LOFT 5 - 2 BED  
67.4 SQ M, 725 SQ FT

LOFT 6 - 1 BED  
48.6 SQ M, 523 SQ FT



4F



DISCLAIMER: These floor plans are for guidance purposes only and were prepared from preliminary plans and indicative layouts before the completion of the properties.