

**Elevate Property Group**

Revised November 2022



Welcome.



Here to stay.

At Elevate, we don't like to go with the flow. We like to challenge the norm and deliver the unexpected. We go where our instincts take us. To places where we can bring new meaning to historical icons or create new landmarks that revitalise our region's communities.

We focus on keeping the best of what's good and then we make it better.



# THE CHASE

2015

Early works.





GRAND VIEW  
ASTWOOD BANK

2014





  
**HOLYWELL CHAPEL**  
—  
MALVERN

2014





ST. PAULS  
HOUSE

2017



# Transform.

## Commercially Savvy.

Quality of design and quality of build are equal partners in our process. We use time honoured building practices to support ground breaking design. The results are evident in our track record of delivering strong returns from bespoke developments that capitalise on location and redefine local heritage.





# CONCORD

ESTD. 1936  
BIRMINGHAM - ENGLAND

2015

The penthouse at Concord House in Holloway Head, Birmingham, sold fully furnished for £1.8 million. The most expensive city centre apartment that has ever been sold in Birmingham.



CONCORD

ESTD. 1936  
BIRMINGHAM - ENGLAND

# QUEENSWAY HOUSE

2017

Home to 6 stunning loft style apartments, Queensway House is a majestic blend of cosseted luxury and urban energy.





# QUEENS HOUSE

2017

A modern collection of 62  
apartments centrally located in  
the heart of Coventry.



The image is a photograph of a brick apartment building at dusk. The building is the central focus, featuring a mix of brickwork and dark window frames. To the left, a large tree with light-colored blossoms is in the foreground. In the background, another modern building is visible. A sign is posted in front of the brick building. The sky is a deep blue, and the overall lighting is warm and atmospheric.

TT  
TT

TENNANT ST. LOFTS

2018

40 stylish apartments perfectly positioned. Consummate design with enviable specifications.



PRINCES GATE

2019

A residential development of 100 luxury studio, one and two bedrooomed apartments positioned in the heart of Solihull, one of the most coveted areas in the UK.





# Redefine.

## Sustainable legacies.

We're in the business of regeneration, so for us change is opportunity. We take structures and environments that have outlived their original purpose and through intelligent, sustainable design we give them a new lease of life. And in doing so we transform the personality of a place and build character within a community.



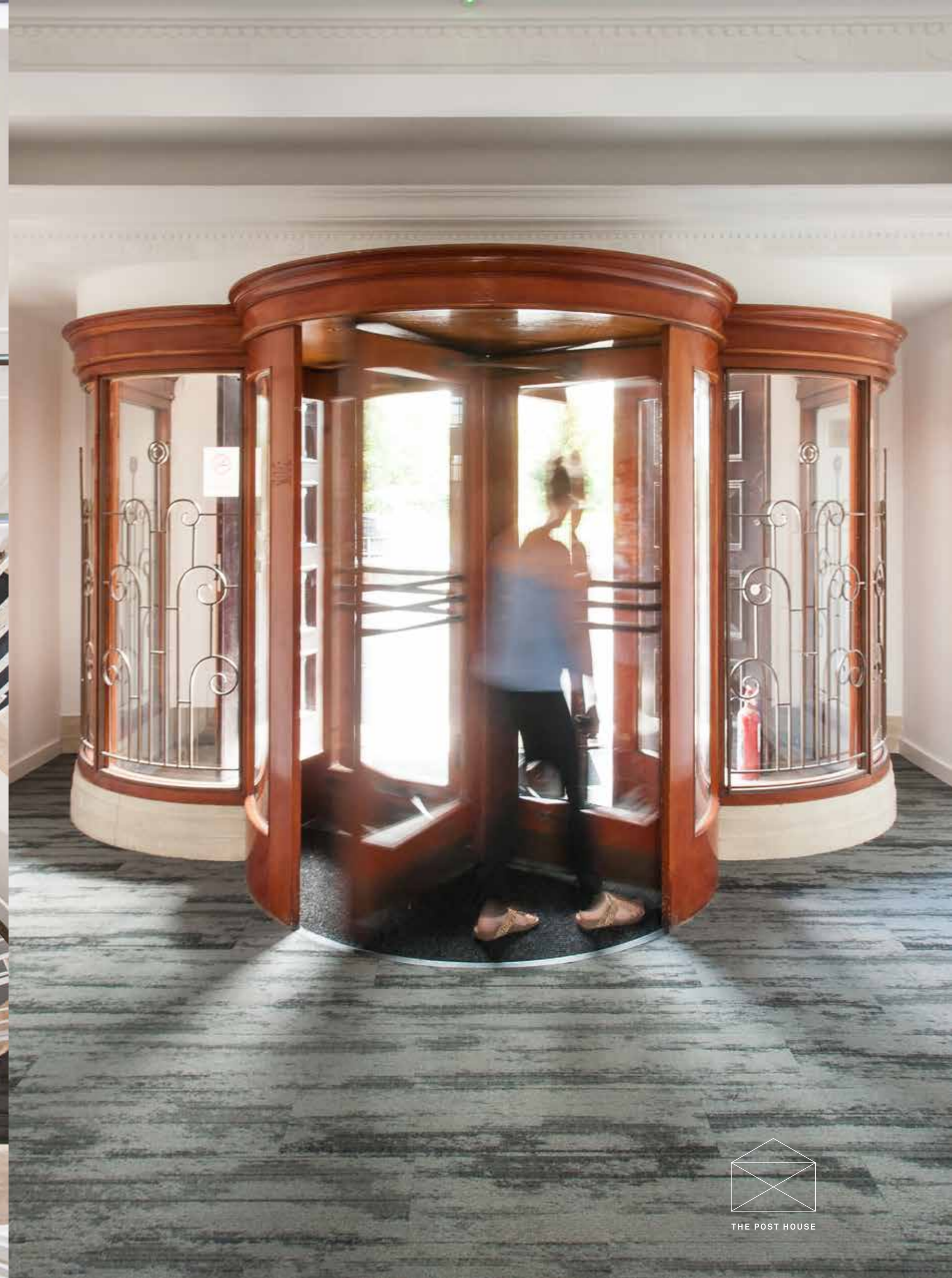


THE POST HOUSE

2019

A landmark development of 48 apartments combining Art Deco architecture and modern interiors in thriving Gloucester.





THE POST HOUSE



ASSAY LOFTS

2019

Born out of history, Assay Lofts is a development of 32 impeccably composed living spaces in the heart of Birmingham's resurgent Jewellery Quarter.

COMPARED  
TO WHAT...



ASSAY LOFTS

# ALBAN

HOUSE

2020

A unique High Street development of luxury apartments, penthouses all enjoying convenient city centre living in the heart of Hereford.









VICTORIA POINT

2020

An exemplary scheme of 216 residences,  
meticulously designed and luxuriously  
appointed, within close proximity to  
Ashford International train station.





IT IS  
WHAT  
IT IS

N°25  
CLIVELAND  
STREET

2021

Cliveland St. is home to 52 crafted living quarters each echoing the distinctive character of their unique location.



in t  
and  
in  
Bei  
in t  
and  
Th  
be

N°25  
CLEVELAND  
STREET

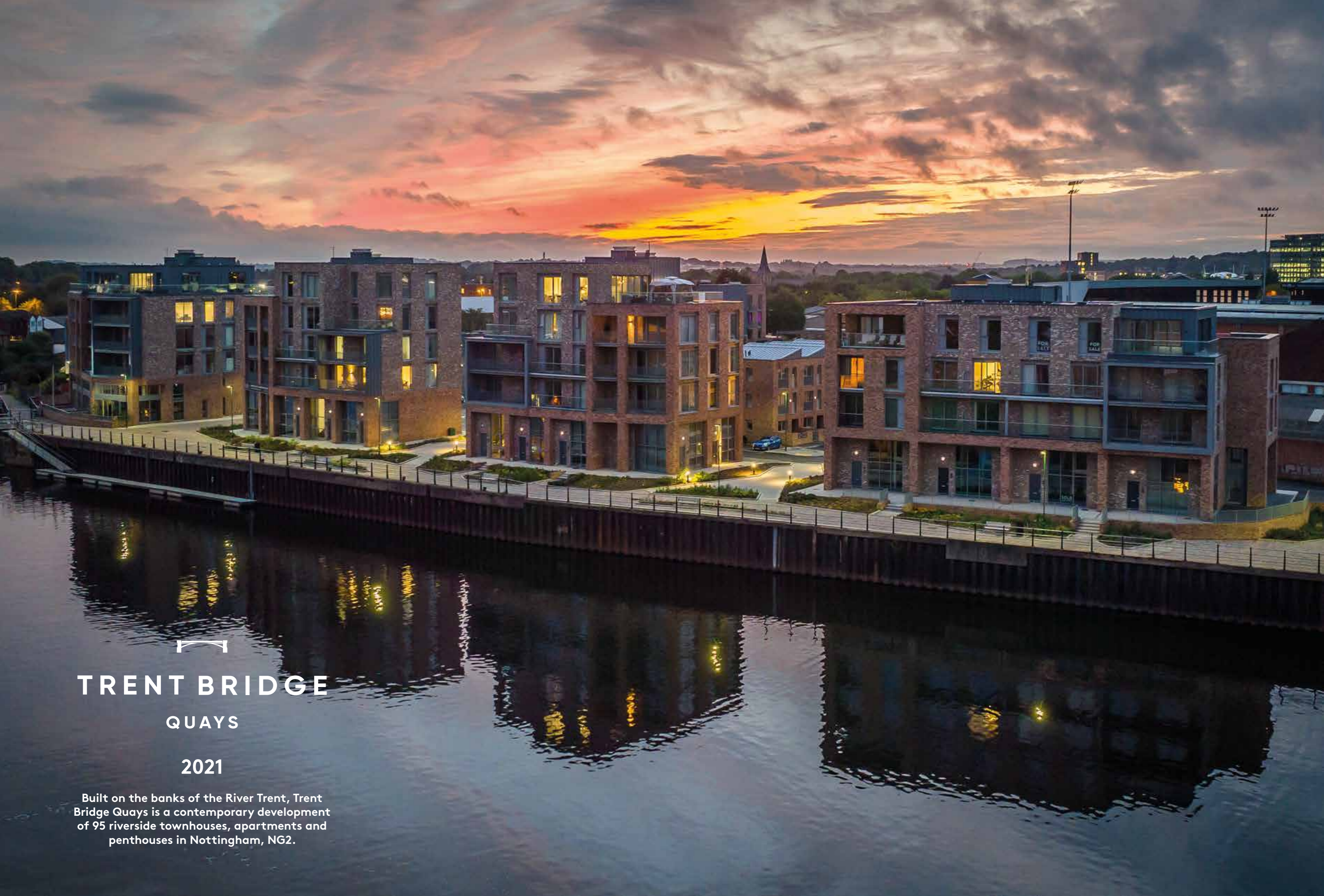
# SHELDON COURT B26

2021

Sheldon Court is a new development of 64 affordable 1 and 2 bedroom apartments surrounded by leafy landscapes in Sheldon, one of East Birmingham's most thriving areas.







# TRENT BRIDGE QUAYS

2021

Built on the banks of the River Trent, Trent Bridge Quays is a contemporary development of 95 riverside townhouses, apartments and penthouses in Nottingham, NG2.







TRENT BRIDGE  
QUAYS

# Reconnect.

Experience is everything.

Elevate exists to strengthen the connections between people and places. It's not just another property to us, it's a way to live. Through progressive partnering we create places that enhance the local landscape and celebrate the diversity of the local community. New relationships built around experience.



# PRIORY HOUSE

Circa  1950

2022

The regeneration of this iconic landmark building will create 79 unique apartments, many with city skyline views in Southside, Birmingham B5.



PRIORY HOUSE  
LOFTS  
79 unique apartments  
ELEVATE Help to Buy SAVILLS  
Savills: 0121 200 4567  
www.savills.co.uk/property/birmingham/b5

PRIORY HOUSE

SOUTHSIDE BLDG. & BARCLAY LTD

HOUSE

PRIORY HOUSE





CAMDEN ST.	B1	<b>HEATON</b> HOUSE
	BHX	

**2022**

Restoration of a historic 19th century Georgian villa 'Heaton House'. The scheme consists of 14 townhouses having terraced gardens, on-site gated car parking and 42 apartments including 6 Lofts.



CAMDEN  
ST. YARD  
+ BARN S

2023

A mixed use development comprising  
of townhouses & commercial space  
fronting Camden St, Birmingham, B1.





CAMDEN VILLAGE

CAMDEN  
ST. YARD  
+ BARN



An architectural rendering of a modern multi-story brick building with large windows and a ground-floor glass storefront. The building is situated on a street corner with a paved sidewalk and a road with yellow double lines. People are walking on the sidewalk, and a car is driving on the road. The sky is blue with scattered white clouds.

TRENT BRIDGE  
QUAYS

PHASE II

2023

Muller Yard (Trent Bridge Quays Phase II), is a new development on the banks of the River Trent consisting of 44 apartments, 14 townhouses and 5,177sqft of retail/commercial space fronting Meadow Lane.



EDITH WALK SHOP

EDITH WALK SHOP



# EDITH WALK

2023

A new development of 11 houses, 6 apartments and 3 Retail/Commercial units located in the centre of Great Malvern, a picturesque spa town.



GUNSMITH HOUSE  
EST 1901

*Price Street*



**2023**

Situated In the Gun Quarter, the Price Street regeneration scheme will create 84 new residential apartments, many having their own balconies and roof terraces.





# IMPERIAL HOUSE

PRINCES GATE PHASE II

2023

Phase II of a residential development incorporating 60 brand new luxury apartments positioned in the heart of Solihull.





IMPERIAL HOUSE

PRINCES GATE PHASE II







# SILK YARD

APARTMENTS

**2024**

**A scheme to build 258 apartments. Planning permission for both Phases 1 and 2 has now been granted. The first phase of the scheme will provide 94 apartments on the corner of John Street and Castleward Boulevard.**



# CHAPMANS YARD

2024

Located close to Birmingham's Mailbox, Grand Central station and the City centre is Chapmans Yard. A new regeneration scheme will create 111 residential apartments coming 2024.



Restore.

Stand our ground.

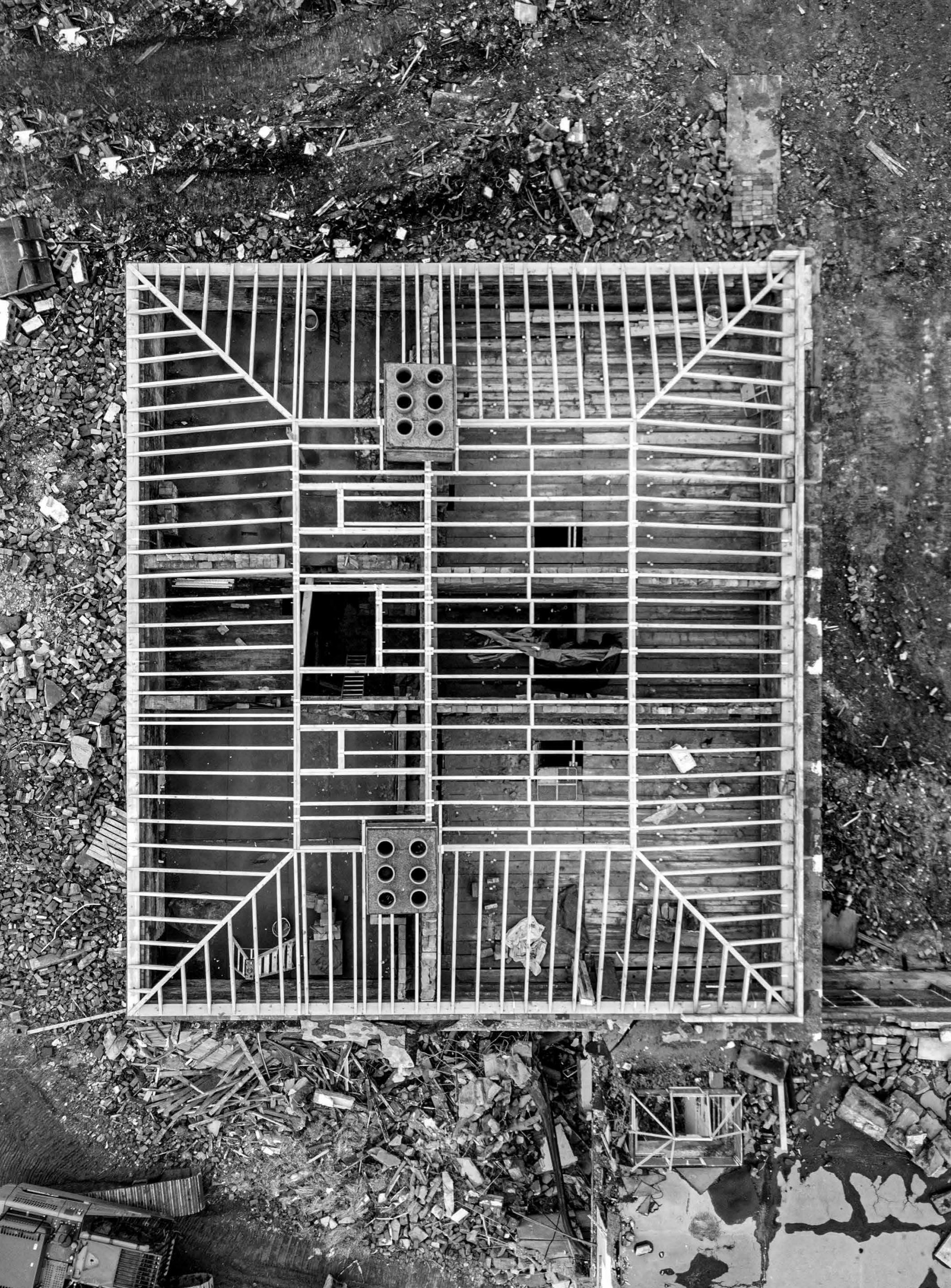




CAMDEN ST.  
BHX B1

**HEATON**  
HOUSE

A work in progress.  
Restoration of a historic 19th century  
Georgian villa 'Heaton House'.





# Art + Graft.



## Urban Myths.

For us, bricks and mortar is never enough. We go beyond the ordinary by commissioning local artists to create unique art pieces that work in harmony with our sites and give our buildings their stand out identity. These artworks are taking on a life of their own and becoming modern day urban myths.







CCOMPARED  
TC WHAT...

mfg  
0121 2367288  
mfg.com

CHARLOTT ST

ST PAUL'S SQUARE







# Aftercare.

Customer service for  
all our home owners.

## Commitment.

Elevate Property Group are committed to providing the highest level of after care service to our home owners so they have everything they need to get settled into their new homes as quickly as possible.

We use an independent after care specialist who is on hand to guide new owners through the handover process including the 'home owners checklist' and property induction.

They can also provide useful information around warranty terms and will be the single point of contact for any post completion issues.





Steve Dodd

# People.

## Meet the Team



Mike Diskin  
CFO



James Costello  
Development  
Director



Sam Meeten  
Land  
Director



David Hofton  
Sales  
Director



Oli Diskin  
Corporate  
Associate



Sue Crawford  
Office  
Manager



Jules Dodd  
Interior  
Designer



Stella Xydias  
Sales  
Manager



2011 – Incorporation of Elevate Property Group

# Financials.

£150m+

Current Funding Pool available

650

New homes in the production pipe line

1200

New homes completed since incorporation in 2011

£35m

Shareholders Funds

£250m

Development value of active sites

10 Year

Sustained growth

12

Active sites

£375

Average selling price per foot

£260k

Average price per dwelling



CONCORD

ESTD. 1936  
BIRMINGHAM - ENGLAND





[elevatepropertygroup.co.uk](http://elevatepropertygroup.co.uk)

St Paul's House, 23 St Paul's Square  
Birmingham B3 1RB  
T +44 (0)121 272 5729  
E [info@elevatepropertygroup.co.uk](mailto:info@elevatepropertygroup.co.uk)